

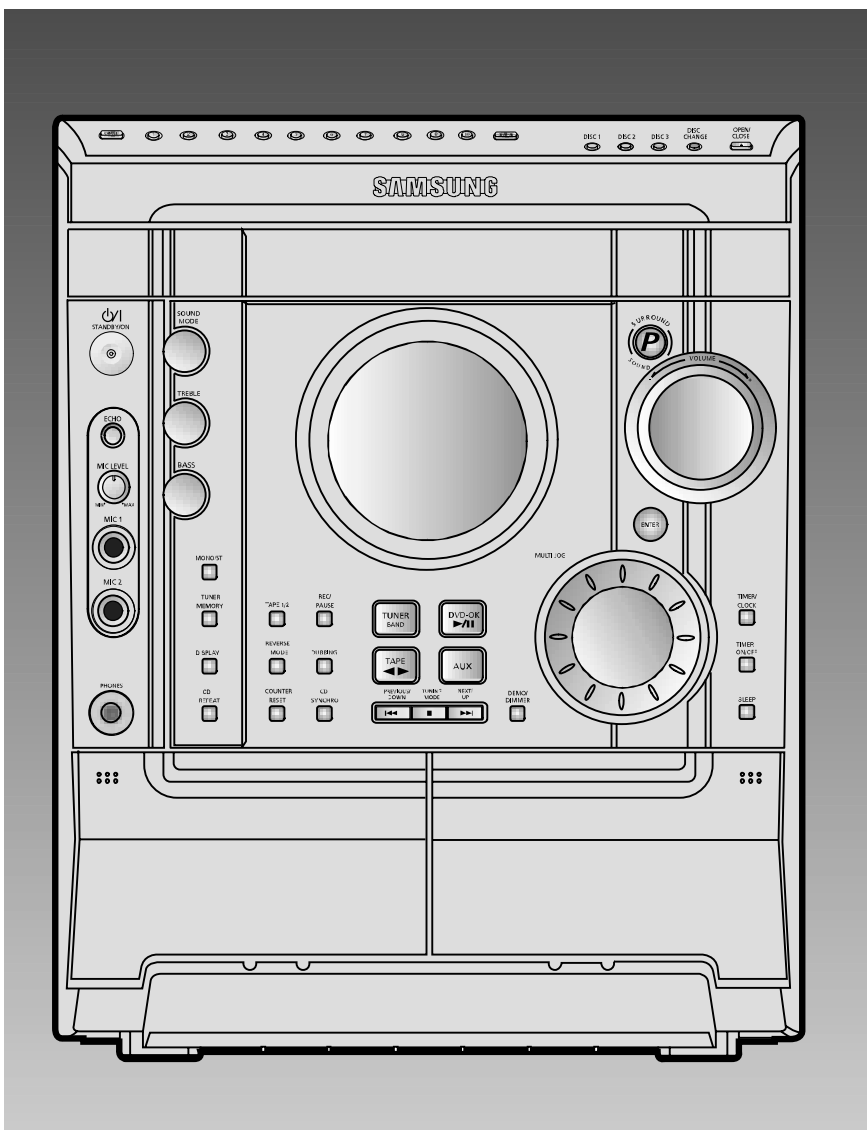
3 DVD CHANGER MINI MINI COMPONENT

Basic Model: MAX-KJ650

* Application Model:
MAX-KJ650Q/XFO, MAX-KJ630Q/XFO
MAX-KJ610/XFO, MAX-KT65Q/XFO

SERVICE Manual

MIMI MIMI COMPONENT SYSTEM



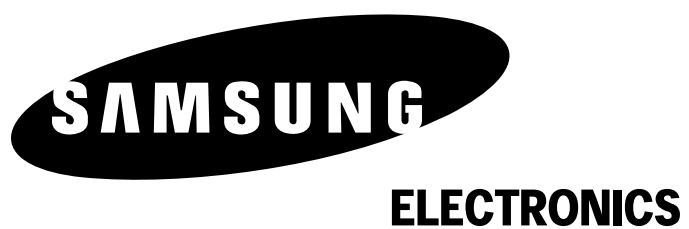
CONTENTS

1. Alignment and Adjustments
2. Exploded Views and Parts List
3. Electrical Parts List
4. Block Diagrams
5. Wiring Diagram
6. Schematic Diagrams

- Confidential -

Notice !!

You can search for the updated part code through ITSELF web site.
URL; <http://itself.sec.samsung.co.kr>

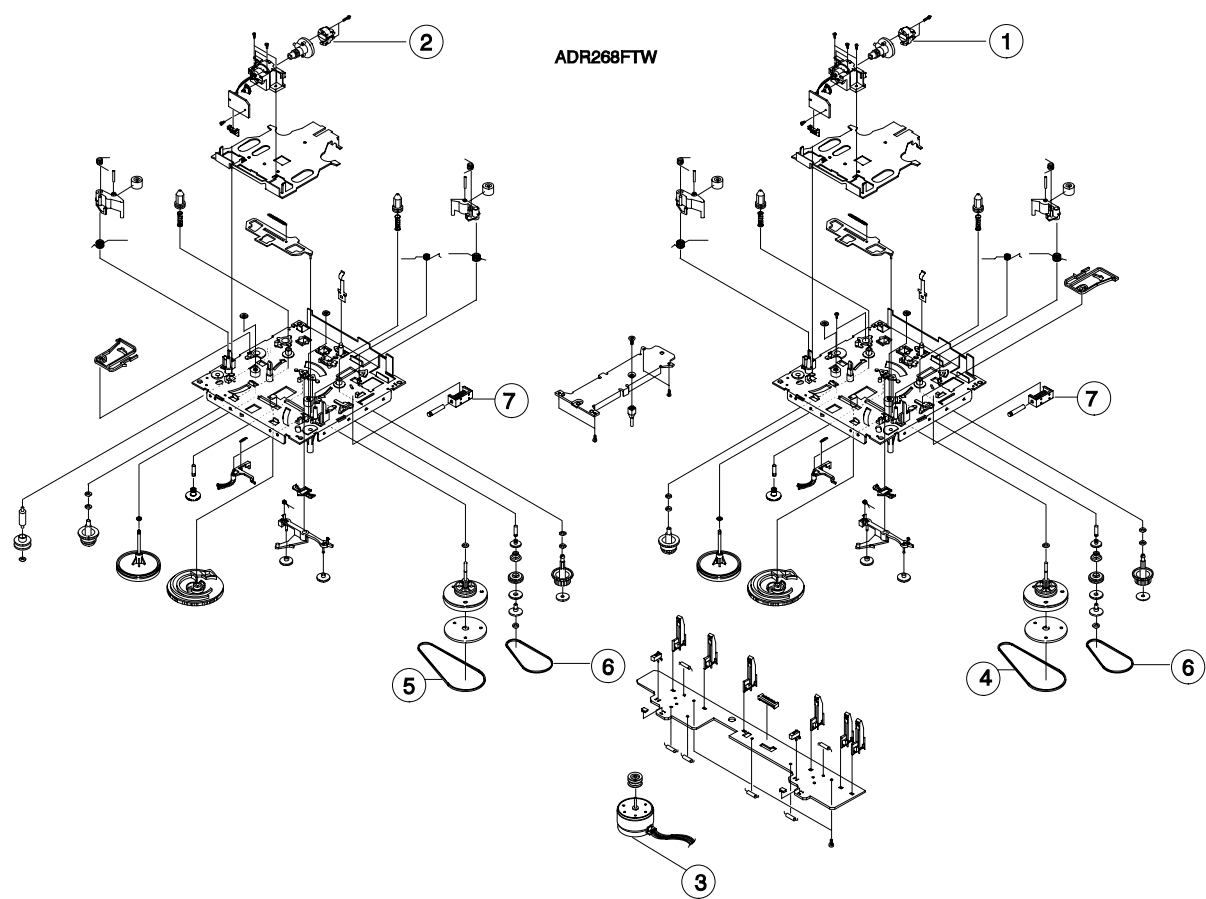


This Service Manual is a property of Samsung Electronics Co.,Ltd.
Any unauthorized use of Manual can be punished under applicable
international and/or domestic law.

© Samsung Electronics Co.,Ltd. SEP. 2004
Printed in Korea
Code no. AH68-01642D

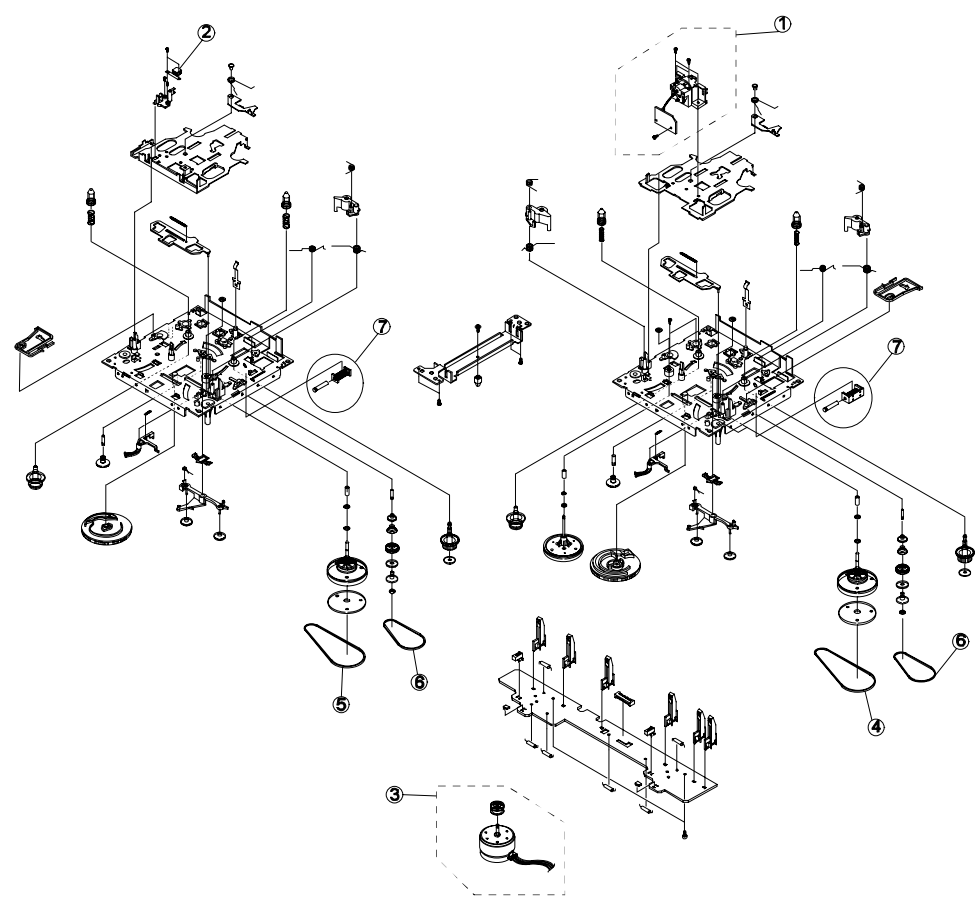
2.Exploded Views and Parts List

2-1-1 Cassette Deck :ADR268FTW1 (OPTION)



No.	Code No.	Description	Specification	Remarks
	AH59-01146A	DECK-CASSETTE	ADR268FTW1	
1	AH81-01030A	ASSY R/P HEAD	TR56R-AA2N1	MT91-11012W
2	AH81-01033A	ASSY P/B HEAD	DZK10P-122N3	MT91-11013C
3	AH81-00422A	ASSY MOTOR	ADR246DSW	MT91-15013Y
4	AH81-00364A	BELT MAIN1	ADR246DSW	6602-001056
5	AH81-00365A	BELT MAIN2	ADR246FTW	6602-001010
6	AH81-00101A	BELT SUB	34.1*1.1*1.1	6602-001055
7	AH81-00102A	SOLENOID	DAT-05A1	MT75-00049A

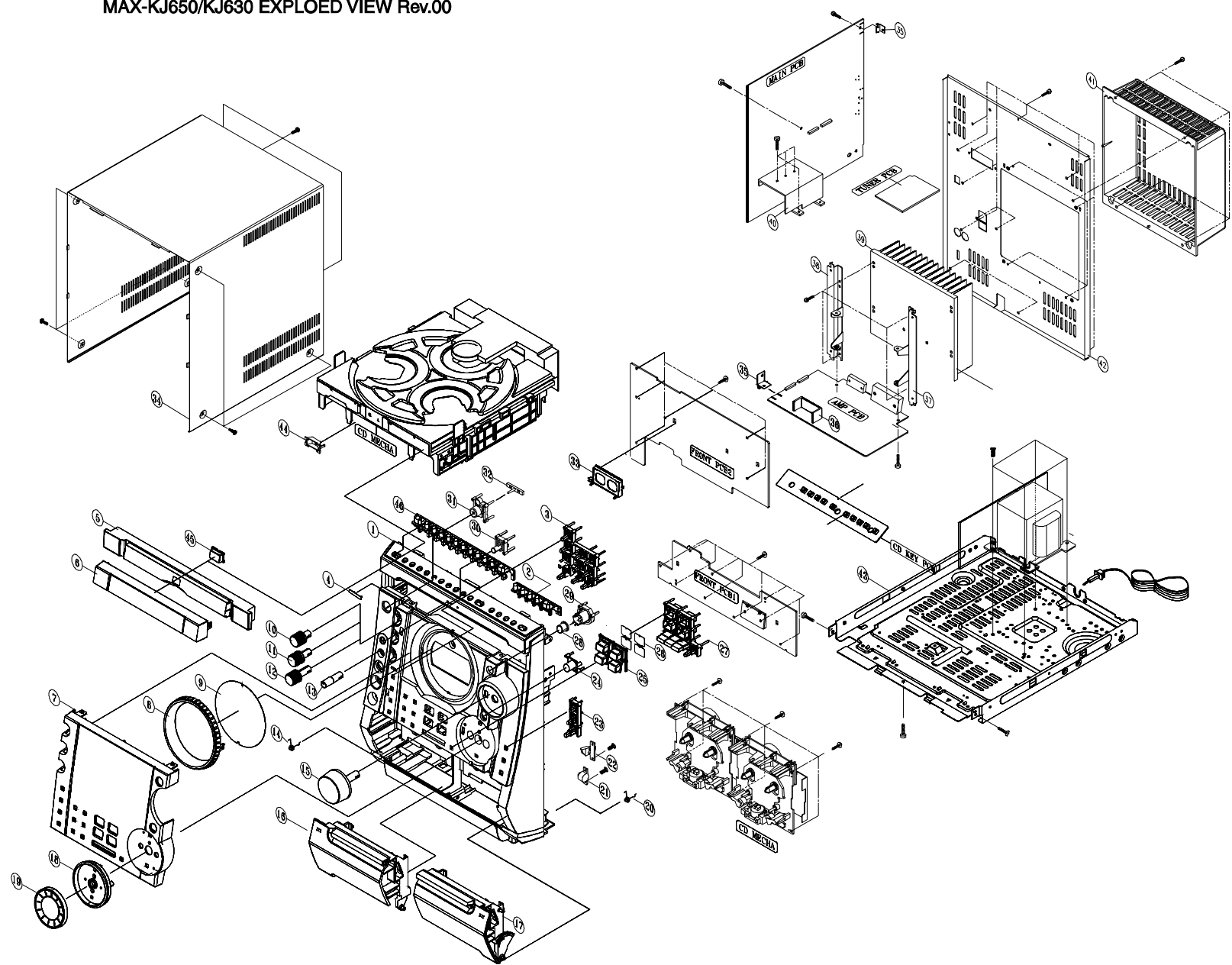
2-1-2 Cassette Deck :ADR268AMW1 (OPTION)



No.	Code No.	Description	Specification	Remarks
	AH59-01145A	DECK-CASSETTE	ADR268AMW1	
1	AH81-00368A	ASSY R/P HEAD	ADR2400 (SANKYO)	MT91-11010T
2	AH81-00141B	ASSY P/B HEAD	MK10P-AA2N3	MT59-00041V
3	AH81-00363A	ASSY MOTOR	ADR246DSW	MT91-15012J
4	AH81-00364A	BELT MAIN1	ADR246DSW	6602-001056
5	AH81-00365A	BELT MAIN2	ADR246DSW	6602-001057
6	AH81-00101A	BELT SUB	34.1*1.1*1.1	6602-001055
7	AH81-00102A	SOLENOID	DAT-05A1	MT75-00049A

2-2 Total Exploded View and Parts List

MAX-KJ650/KJ630 EXPLOED VIEW Rev.00

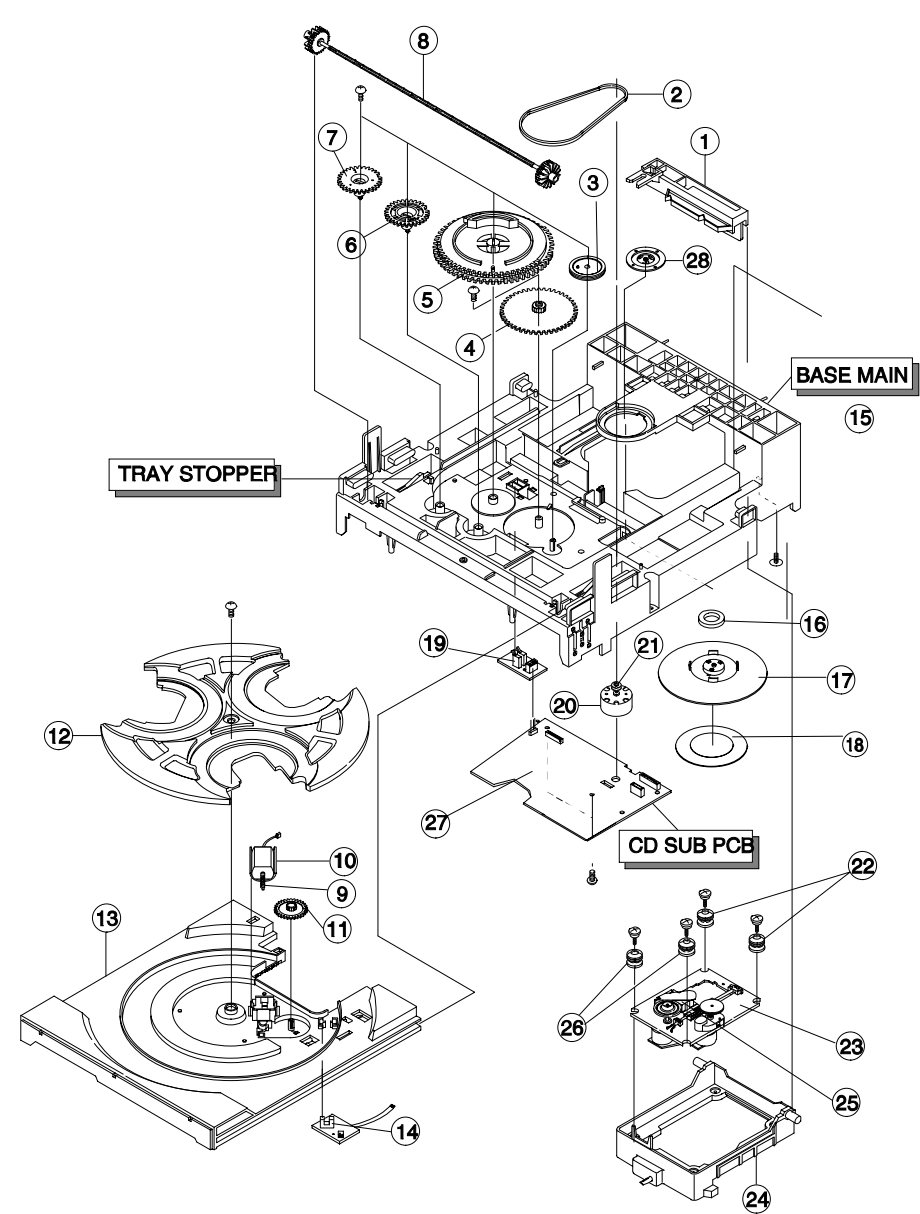


* Parts List of Total Exploded view

NO	CODE NO	PART NAME	Q'TY	REMARK
1	AH64-02744B	CABINET-FRONT	1	
2	AH64-02775B	KNOB-OPEN	1	
3	AH64-02773B	KNOB-STOP	1	
4	AH64-70003K	BADGE-SAMSUNG	1	
5	AH64-02796B	DOOR-DVD	1	
6	AH64-02745B	WINDOW-CD	1	
7	AH64-02789B	WINDOW-FRONT	1	
8	AH64-02790B	DECO-VFD	1	
9	AH63-00683B	FILTER-VFD	1	
10	AH64-02791B	KNOB-ROTATE1	1	
11	AH64-02792B	KNOB-ROTATE2	1	
12	AH64-02793B	KNOB-ROTATE3	1	
13	AH64-02771B	KNOB-MIC	1	
14	AH61-00552B	SPRING-DOOR L	1	
15	AH64-02768B	KNOB-VOLUME	1	
16	AH64-02764C	DOOR-CASS L	1	
17	AH64-02765C	DOOR-CASS R	1	
18	AH64-02767B	DECO-JOG	1	
19	AH64-02769B	KNOB-JOG	1	
20	AH61-00553B	SPRING-DOOR R	1	
21	AH61-80030A	DAMPER-ASSY	2	
22	AH95-50001A	LACTH-ASSY	2	
23	AH64-02776B	KNOB-TIMER	1	
24	AH64-02774B	KNOB-ENTER	1	
25	AH67-00259B	LENS-FUNCTION	1	
26	AH63-00684A	FILTER-FUNCTION	2	
27	AH64-02779B	KNOB-FUNCTION	1	
28	AH67-00258B	LENS-P SOUND	1	
29	AH61-01513A	HOLDER-P SOUND	1	
30	AH64-02772B	KNOB-ECHO	1	
31	AH64-02770B	KNOB-POWER	1	
32	AH67-00255A	LENS-POWER	1	
33	AH61-01520A	HOLDER-VFD	1	

24	AH64-02774B	KNOB-ENTER	1	
25	AH67-00259B	LENS-FUNCTION	1	
26	AH63-00684A	FILTER-FUNCTION	2	
27	AH64-02779B	KNOB-FUNCTION	1	
28	AH67-00258B	LENS-P SOUND	1	
29	AH61-01513A	HOLDER-P SOUND	1	
30	AH64-02772B	KNOB-ECHO	1	
31	AH64-02770B	KNOB-POWER	1	
32	AH67-00255A	LENS-POWER	1	
33	AH61-01520A	HOLDER-VFD	1	
34	AH64-00689A	CABINET-TOP	1	
35	AH61-00685A	BRKT-PCB	2	
36	AH62-00102A	HEAT-SINK POWER		
37	AH61-00973A	BRKT/HEAT-SINK L	1	
38	AH61-00977A	BRKT/HEAT-SINK R	1	
39	AH62-00111A	HEAT-SINK MAIN	1	
40	AH62-00113A	HEAT-SINK TR	1	
41	AH61-01514A	COVER-REAR	1	
42	AH64-02778B	CABINET-REAR	1	
43	AH64-02840A	CABINET-BOTTOM	1	
44	AH61-00390A	HOLDER-DVD	1	
45	AH67-00260C	LENS-DVD	1	
46	AH64-02794B	KNOB-KEYCON	1	

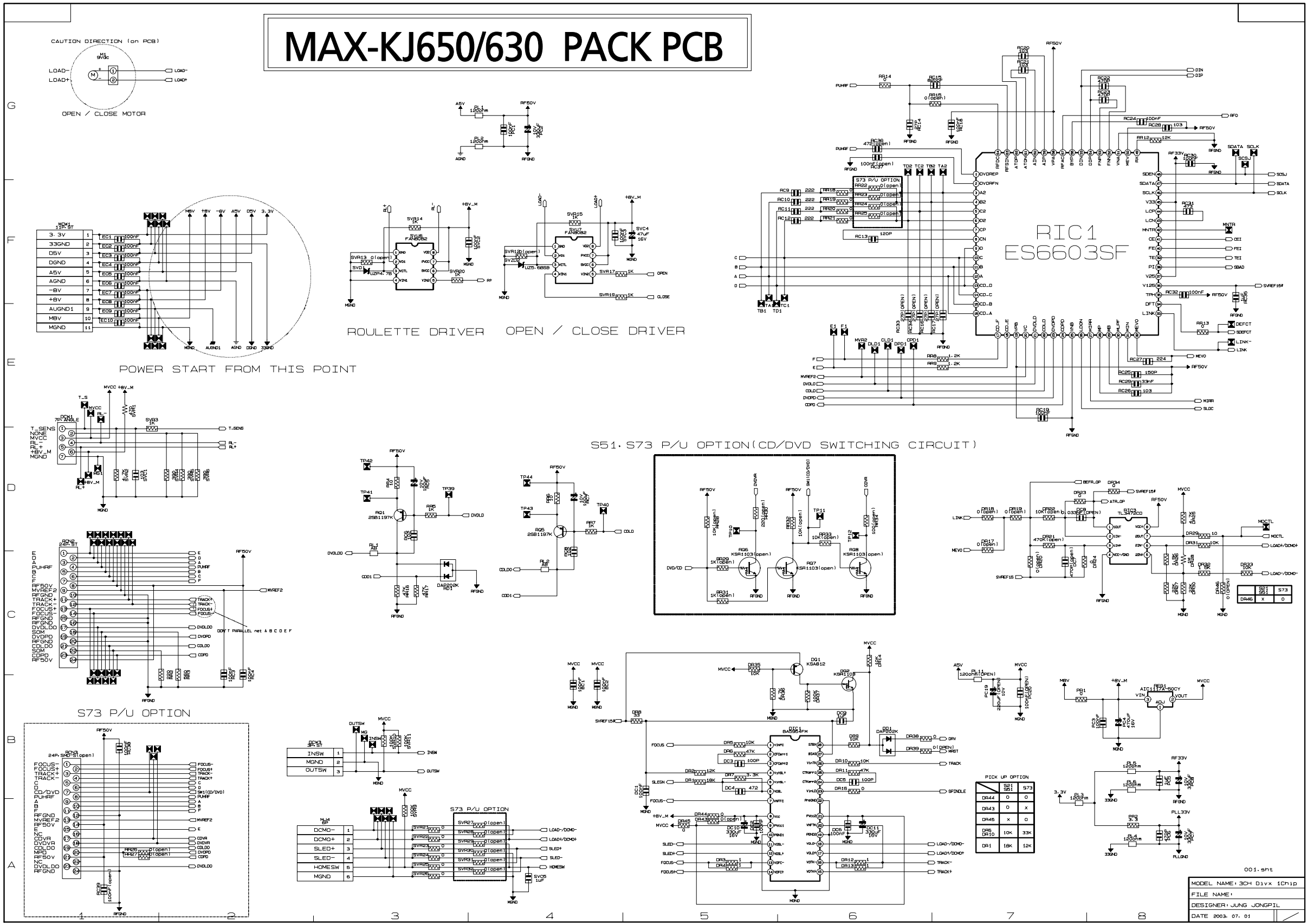
2-3 CD Deck Exploded View and Parts list



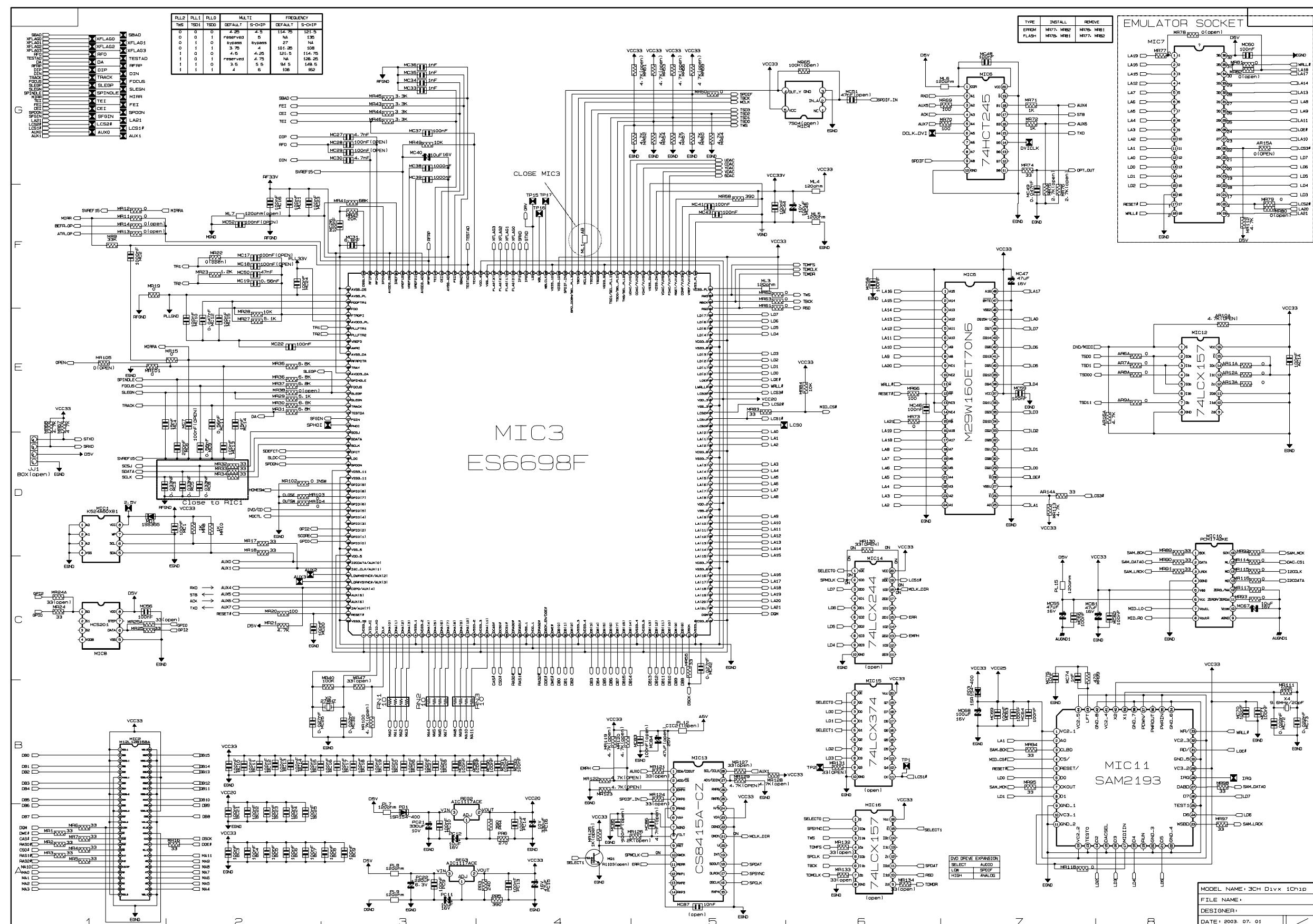
No.	Code No.	Description	Specification	Remarks
1	AH66-80022A	SLIDER-CAM	ABS HF-380 NTR	
2	AH66-60034A	BELT-LOAD	CR	
3	AH66-20186A	GEAR-PULLEY	POM (M90-44) WHT	
4	AH66-20187A	GEAR-LOAD	POM (M90-44) BLK	
5	AH66-20188B	GEAR-CAM	POM (M90-44) WHT	
6	AH66-20189B	GEAR-TRAY	POM (M90-44) BLK	
7	AH66-20190B	GEAR-CONVERT	POM (M90-44) WHT	
8	AH66-20191A	GEAR-SYNCRO	ABS HF-380 NTR	
9	AH66-20192A	GEAR-WORM	POM(M90-44),M0.5,PCD4.5	
10	AH31-12001A	MOTOR-LOADING	FF-030PN-09120	
11	AH66-20193A	GEAR-ROULLETE	POM(M90-44) BLK	
12	AH63-00324A	TRAY-ROULLETE	ABS XR-401 BLK	
13	AH63-00325A	TRAY-DISC	ABS BLK	
14	AH32-10001F	SENSOR	KPI-L06	
15	AH61-00837A	BASE-MAIN	ABS,NATURAL,CMS-300	
16	3302-000159	MAGNET	AC,3500-3800G,2.6-3.2MGOe,30	
17	AH63-90053A	TABLE-CHUCK	,ABS,+GF20%,BLK,	
18	AH63-00068B	SHEET-CHUCK	SHEET,HYMERON,BLK,0.4T	
19	3405-000101	SWITCH -MICRO	MLS-24	
20	AH31-10021A	MOTOR-DC	RF-500TB,9VDC/130MA	
21	AH66-10008A	PULLEY-MOTOR	POM,BLK,CMS-CR3	
22	AH73-10031A	RUBBER-CD(R)	SI,CMS-300,40,RED	
23	AH91-60150C	CDP DECK ASSY	CMS-D73SG6U	
24	AH66-30098A	LEVER-LIFTER	ABS BLK CMS-300	
25	AH30-00007A	PICK-UP	SOH-AD3	
26	AH73-10034A	RUBBER-CD(G)	SI,CMS-300,40,GREEN	
27	AH92-00922A	ASS'Y PCB CD MAIN		
28	AH61-00225A	BRKT-CHUCK	SECL 0.8t	

6. Schematic Diagram

6-1 DVD Frontend parts (COMMON)



6-2 DVD Backend Parts(COMMON)



6-3 DVD DAC Parts(COMMON)

